

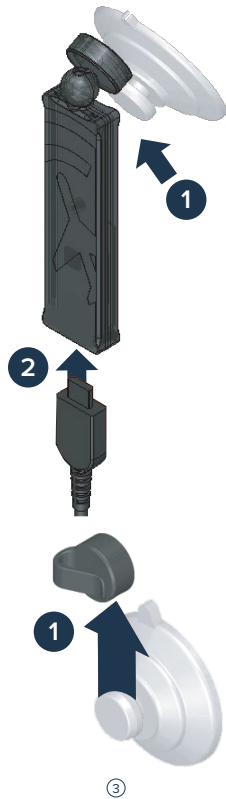


STEP 1

Slide one suction cup into the gimbal mount at the top of Scout, and slide the other into the separate cable clip.

STEP 2

Insert the Micro-USB cable into Scout, then secure Scout to a surface using the first suction cup.

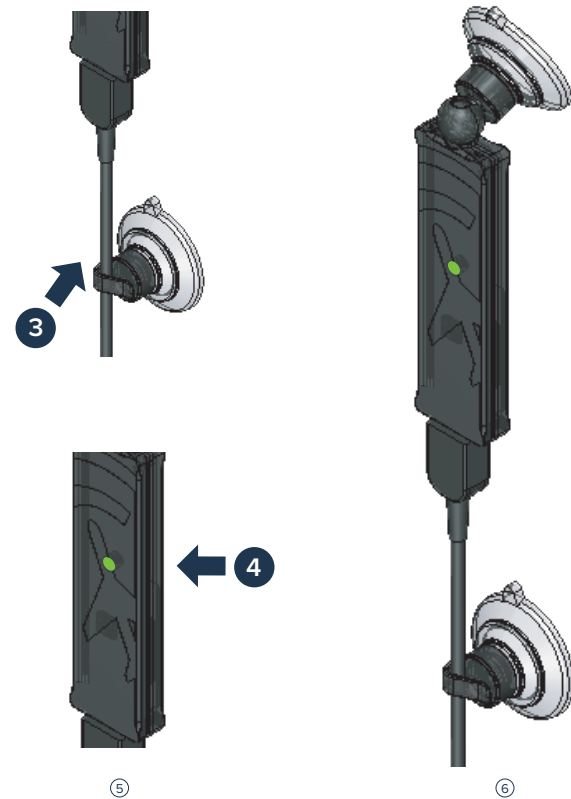


STEP 3

Slide the cable clip with suction cup onto the cable and press it onto the same surface to secure Scout from both ends.

STEP 4

Plug the other end of the Micro-USB cable into a power source. One light indicates power; two lights indicate reception from an ADS-B tower.



STEP 5

Open the Settings app on your iPad or iPhone and go to Wi-Fi. Scout's Wi-Fi network name will be either "Scout-XXXX" or "Ping-XXXX" where "XXXX" is a random sequence of numbers and letters. Tap on the Wi-Fi network to connect.



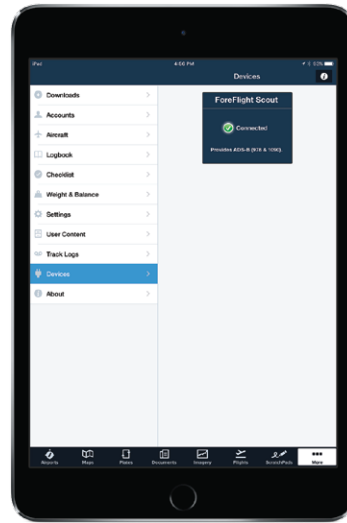
7

8

STEP 6

Open ForeFlight and go to More > Devices to confirm that Scout is connected. Tap the icon for Scout to view detailed information about the connection and information being received.

For the full guide and instructions for updating Scout's firmware, visit foreflight.com/scout/guide



10

Scout receives traffic information on both UAT (978 MHz) and 1090ES (1090 MHz), and weather and NOTAMs/TFRs (FIS-B) when in proximity to a ground station.

ADS-B ground station reception will usually not be available until in-flight.

The traffic displayed by Scout may not represent all nearby traffic, based on ADS-B

11

tower reception and the presence of ADS-B Out capabilities in your aircraft. Reception is dependent on a number of factors, including Scout location, orientation, and aircraft configuration.

Need support? Visit flywithscout.com/support

12

