



ForeFlight

A Boeing Company

FOREFLIGHT BUYING GUIDE



FOREFLIGHT BUYING GUIDE

Products, Plans, & Pricing

foreflight.com/buying-guide

GETTING STARTED WITH FOREFLIGHT

Get up and running with the leading EFB with these simple steps!



Choose a Device

ForeFlight works with all recent iPad and iPhone models, and you can sign into your subscription on up to 2 iPads and 1 iPhone, or 2 iPhones and 1 iPad at once. If buying a new iPad, we recommend the Wi-Fi + Cellular version of either the 11-inch iPad Pro or the iPad mini to benefit from the built-in GPS chip.



**FULL DEVICE
RECOMMENDATION**



Start Your Free Trial

Install ForeFlight Mobile EFB from the App Store on your chosen device and create an account to start your 30-day free trial. During the trial you'll have access to all the features available with our top subscription plan - Performance Plus - so you can see everything the app has to offer before purchasing.



**DOWNLOAD FROM
THE APPLE APP STORE**



Training & Support

Download the Pilot's Guide to ForeFlight Mobile in the Documents tab for the authoritative resource on all features, visit ForeFlight's online Video Library to watch tutorials, recorded webinars, and scenario-based presentations, and go to More > Support in the app to access these and other valuable support resources at any time.

Still stuck? Our expert Pilot Support Team is ready to answer any question you have at team@foreflight.com.



**VISIT OUR
SUPPORT CENTER**



Try CloudAhoy Debrief

Enhance your postflight debrief and refine your flying skills with CloudAhoy Debrief, a data-driven flight analysis tool that integrates directly with ForeFlight Mobile. Sign up for a risk-free 35-day free trial, download the CloudAhoy app, and upload your recorded Track Logs from ForeFlight to experience the value of objective postflight analysis.



**SIGN UP FOR A FREE
CLOUDAHOY TRIAL**

SUBSCRIPTION PLANS



Basic Plus

For basic flight planning, flying, and logging.

BEST FOR: FLAT, RURAL, & FAIR-WEATHER FLIGHTS • PPL STUDENTS • INFREQUENT FLYERS

Basic Flight Planning & Filing

Plan a route in seconds with intuitive touch-planning and smart altitude selection, check your time and fuel burn estimates based on aircraft performance, and file VFR or IFR flight plans with ease. Easily access global airport, FBO, and aeronautical information like frequencies, runways, NOTAMs, and more.

Live & Forecast Weather

Map-based weather layers provide animated radar and satellite, METAR-derived current conditions, AIR/SIGMETs, and more, plus decoded TAF, MOS, and winds aloft forecasts for airports. Plan hours or days ahead with static weather imagery from NOAA and NWS, as well as a 10-day hourly general forecast with an aviation twist.

Charts & Documents

Plan and fly with government-sourced VFR and IFR charts, procedure plates, and airport diagrams for your region, plus an extensive Documents catalog with everything from regulatory texts and advisory circulars to chart supplements and legends, airport directories, and educational handbooks.

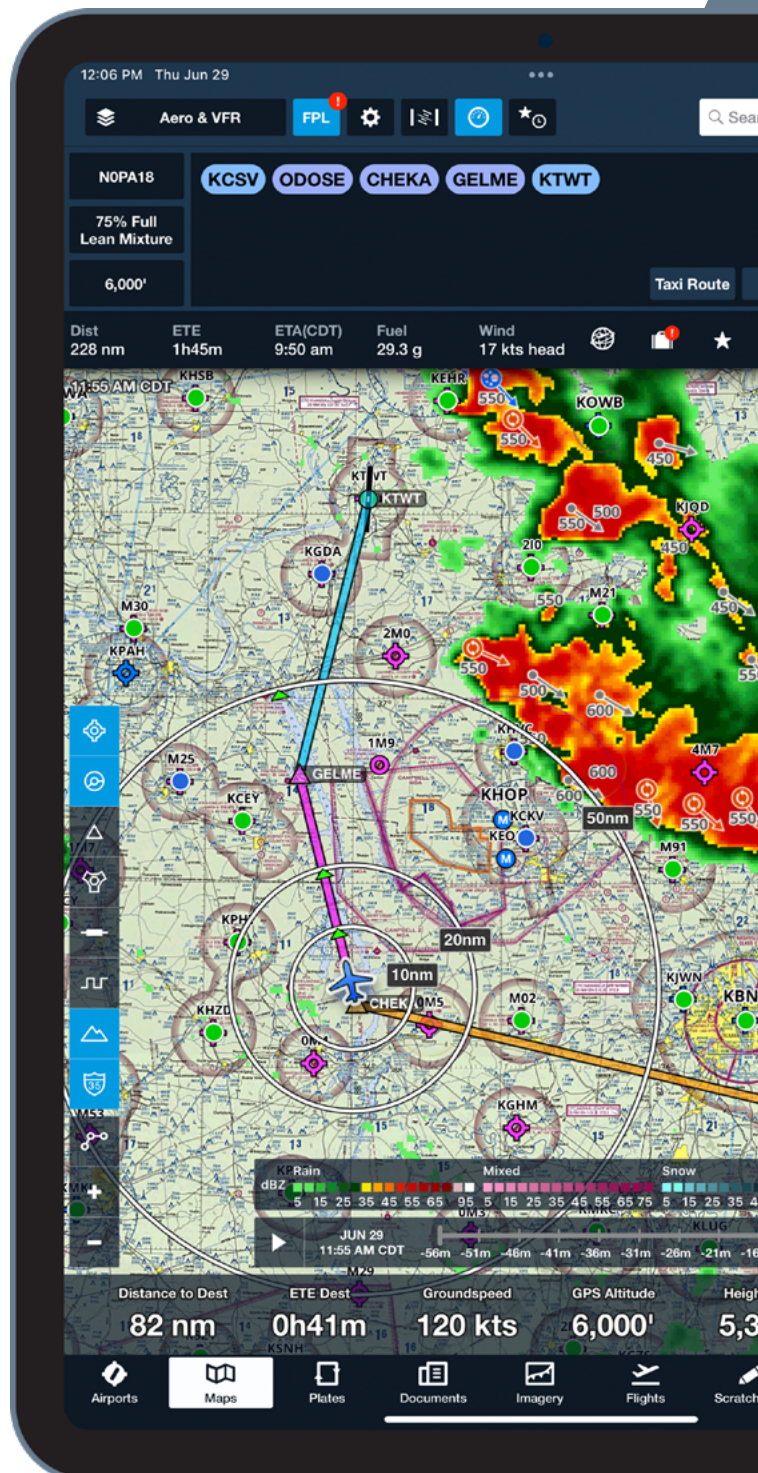
Moving Map & Inflight Features

Seamlessly transition from planning to flying with a range of map overlays and inflight tools to assist with navigation and awareness. Fly safely with a multitude of visual and audio alerts and live display of ADS-B traffic and weather* from supported devices.

Postflight Logging & Debriefing

Record your flights with Track Logs and debrief them directly in ForeFlight or send them to CloudAhoy for detailed postflight analysis. ForeFlight's digital logbook makes it easy to share flights with fellow pilots or your instructor for their signature, track hours and currency, record new certificates and ratings, and much more.

**In supported regions.*



SUBSCRIPTION PLANS

Pro Plus

Includes everything in **Basic Plus**, and...

Adds safety-enhancing terrain and situational awareness features and helpful tools for IFR flying.

BEST FOR: XC, MOUNTAINOUS, URBAN FLIGHTS • HAZARD AWARENESS • IFR STUDENTS



Inflight Hazard Awareness

Visualize terrain and fly more confidently with a trio of features that highlight hazards from multiple perspectives.

Synthetic Vision

An interactive 3D display of terrain, obstacles, runways, and nearby ADS-B traffic targets. Provides an emergency backup attitude capability when paired with an AHRS device like Sentry.

Profile View & Corridor

Easily locate hazards near your route with both an interactive side-on view and its associated corridor on the map revealing the highest peaks and obstacles along each leg.

Hazard Advisor

Highlights hazardous terrain and obstacles directly on the overhead map, with an adjustable altitude slider to quickly plot a safe route through heavy terrain.

Advanced Route & Weather Visualization

Plan more easily around (or above) complex airspace and TFRs with Profile View's interactive route display and multi-altitude planning. Bolster your weather planning with global forecast layers for Icing, Turbulence, Cloud Coverage, and Surface Analysis.

Must-Haves for IFR Flying

Give yourself a break in the soup with powerful features to enhance your IFR flying workflow. View your position directly on geo-referenced procedure plates and taxi charts and overlay them on the map for a fully integrated view. Easily insert holding patterns anywhere in your route with automatic pattern entry selection.

Synthetic Vision (top), Hazard Advisor shading and Glide Advisor with approach plate on map (bottom)



Performance Plus

Includes everything in **Pro Plus**, and...

Best-of-the-best in preflight weather, airport familiarization, and optimized performance planning.

BEST FOR: EXPLORING NEW SKIES • MAXIMIZING PERFORMANCE • FREQUENT IFR FLYERS

Advanced Weather Visualization

Plan with Icing, Turbulence, and Cloud Coverage forecasts integrated into Profile and 3D View to easily find the best altitude for a smooth ride. Dynamic Wind Speed and Temperature forecast layers offer weather insights from the global to the local.

Optimized Flight Planning

Speed up and simplify your flight planning with integrated Weight & Balance calculations and detailed fuel planning. Takeoff & Landing Distances for piston aircraft help you ensure a safe flight no matter the airport, and ForeFlight's optimized Recommended Route gets you "cleared as filed" nearly every time.

3D Airport & Route Visualization

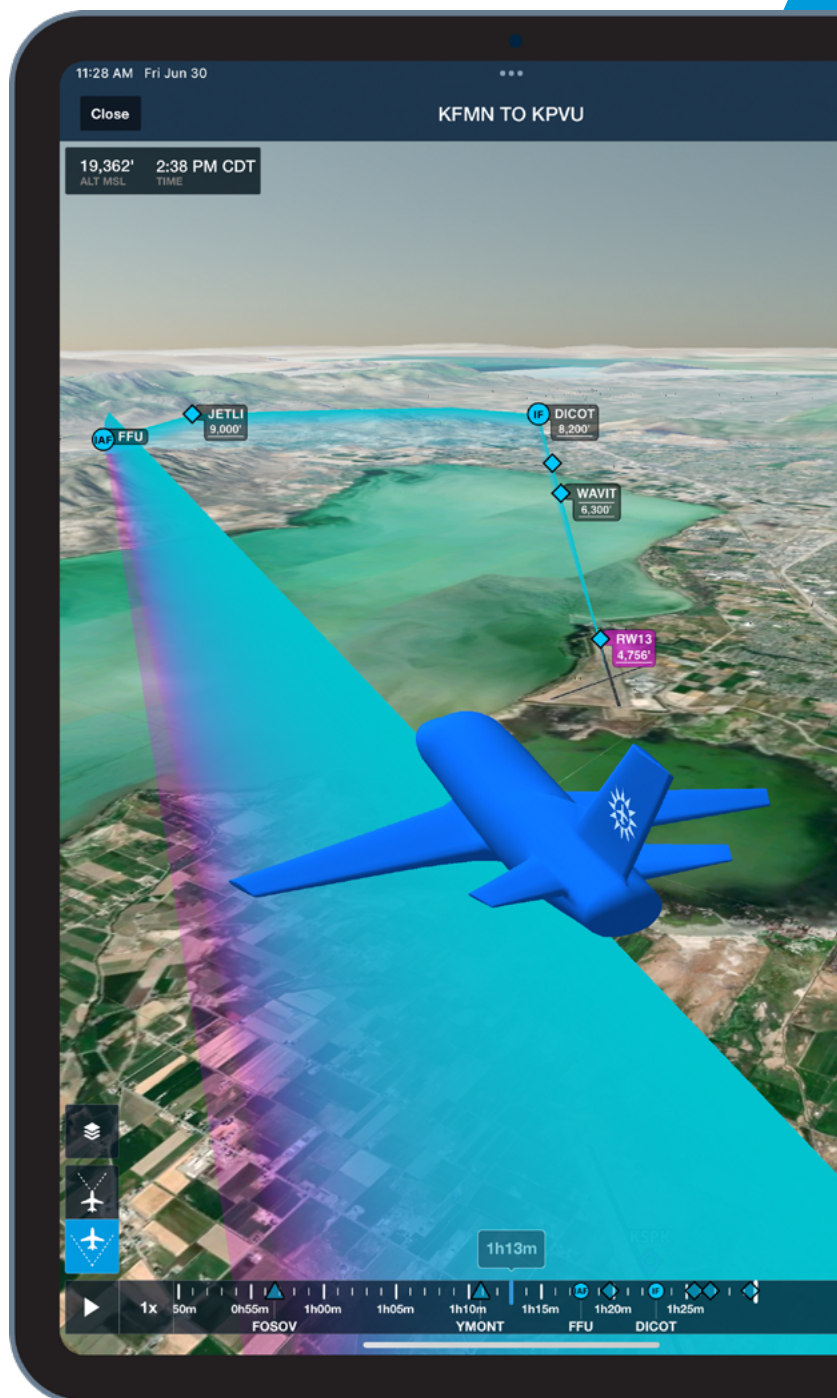
Familiarize yourself with new airports and routes to identify landmarks, preview your approach, check the active runway with live traffic, and see where weather may impact your flight. Replay any recorded flight in 3D to debrief maneuvers or relive your favorite moments.

Augmented IFR Procedures

View critical approach fix information as part of your route to maximize visibility and reduce the risk of errors. ForeFlight helps you find the appropriate minimum for your aircraft and highlights it on the map, as well as displaying speed and altitude restrictions for every fix.

Turbine Aircraft Essentials

The ultimate app for jet and turboprop pilots, with stunningly accurate performance calculations based on OEM data, contract Jet-A fuel card management, FMS flight plan uplink, pre-departure clearance and digital ATIS, and support for ForeFlight's integrated Runway Analysis product.



3D Route Preview with Augmented Approach Fixes and Minimum Altitude

JEPPESEN IFR CHARTS



Enhance your IFR flying with industry-standard Jeppesen charts, available as optional add-ons to any individual ForeFlight Mobile subscription. Coverages include departure, arrival, terminal procedures, data-driven enroute charts, airport charts, and Jeppesen Airway Manuals.



View coverage pricing at foreflight.com/buy.

Ways to Add Jeppesen Charts in ForeFlight

Purchase Coverages from ForeFlight

New and existing ForeFlight Business customers can contact ForeFlight's Sales team at sales@foreflight.com to purchase chart coverages with their ForeFlight subscription. Individual customers can select and purchase chart coverages directly via foreflight.com/buy.

Link Active Jeppesen Account

In addition to buying directly through ForeFlight, you can also log into your Jeppesen account in **More > Jeppesen** using your Jeppesen username and password to activate and download existing chart coverages.

Download & View Jeppesen Charts in ForeFlight Mobile

Chart coverages are automatically queued for download after purchasing or activating them. Access Jeppesen charts throughout ForeFlight Mobile in the same familiar way you access government charts - Jeppesen charts are always listed first when available.

EUROPEAN VFR CHARTS



Enhance your VFR flying in Europe with charts, AIPs, and documents from Jeppesen and other popular chartmakers. Available as add-ons to any ForeFlight subscription that includes the **Europe region**. Visit foreflight.com/europe-data for coverage maps and pricing.

JEPPESEN VFR PROCEDURE CHARTS* Full coverage beside easternmost Europe	ROGERS DATA** VFR 500K Charts for all except easternmost Europe	DFS** VFR 500K Charts for Western, Central, & Southern Europe	AIR MILLION VFR 1:1M Charts for Western, Central, & Southeast Europe
CARTABOSSY VFR 1:1M Chart for France, Switzerland, & Belgium	IGN French VFR ICAO Charts	NATS U.K. VFR ICAO Charts	AVIOPORTOLANO Italian VFR ICAO Charts & Flight Guide
SKYGUIDE VFR GUIDE Swiss VFR Flight Guide	ANS Finnish VFR ICAO Charts	AVINOR Norwegian VFR ICAO Charts	LFV Swedish VFR ICAO Charts

* Available for individual countries / regions or as a bundle

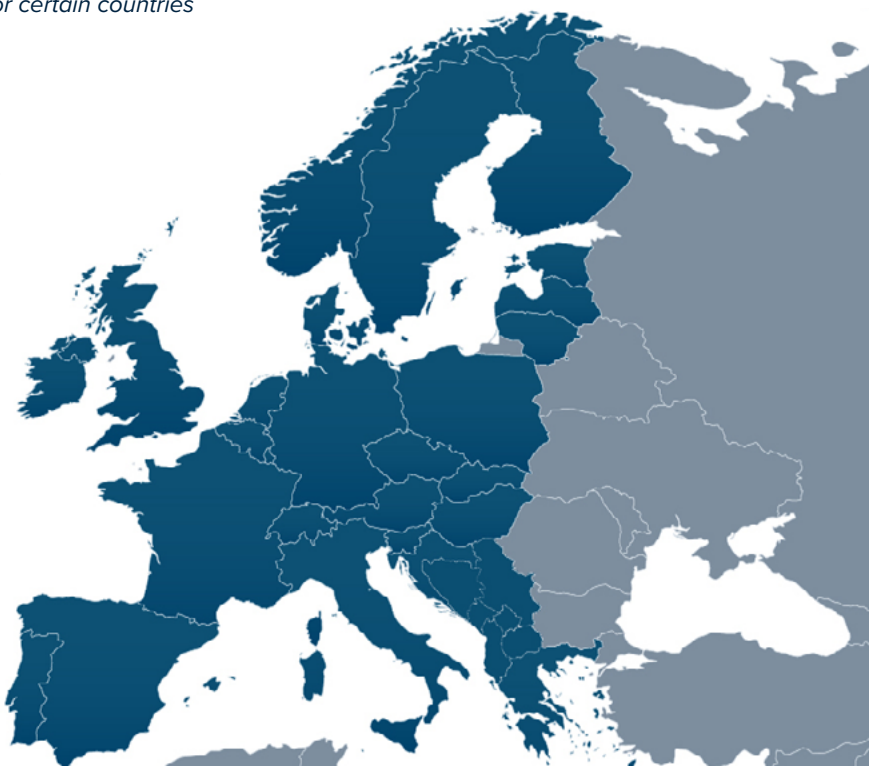
† AIPs / flight guides / trip kits and procedure charts available for certain countries

Included Jeppesen Data

All European ForeFlight subscriptions include Jeppesen's VFR navigation data for Europe and global IFR navigation data, as well as Jeppesen's high-quality global terrain, obstacle, and airspace datasets.

Jeppesen VFR Navigation Data Coverage

Integrated seamlessly into ForeFlight's Aeronautical Map, Jeppesen's digital VFR navigation data dynamically appears as you pan and zoom. Includes VFR waypoints, entries and exits, traffic circuits, no-overfly areas, and more.



FOREFLIGHT RUNWAY ANALYSIS

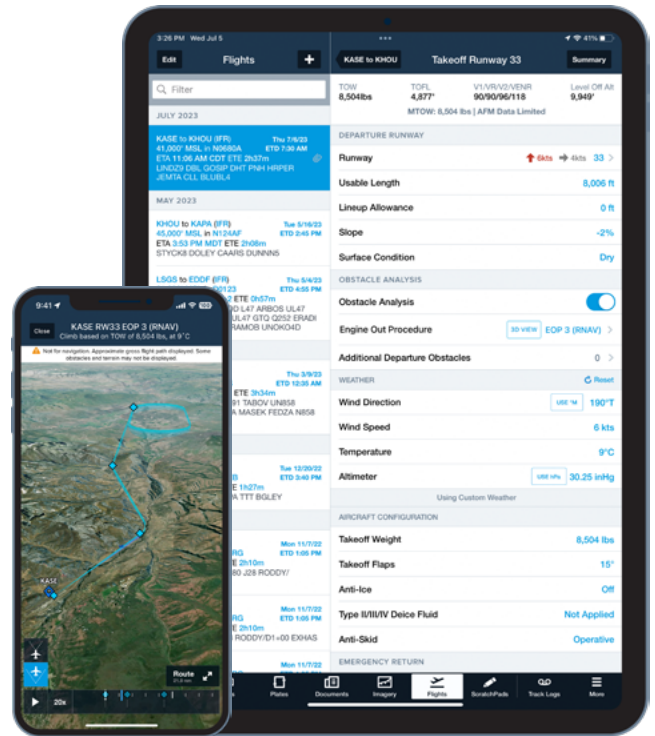


Essential Safety Made Easy

Safety meets convenience with a sophisticated runway and obstacle analysis for turbine aircraft that's fully integrated with ForeFlight's planning workflow.

- Automatic calculations with every change
- Integrated with Weight & Balance
- Takeoff trim calculations supported for most aircraft
- Over 10,000 RNAV Engine-Out Procedures globally
- Visualize EOPs in 3D or on the map

Available for purchase by aircraft type with Performance Plus and Business Performance subscription plans. Visit foreflight.com/runway to learn more and see the full list of supported models.



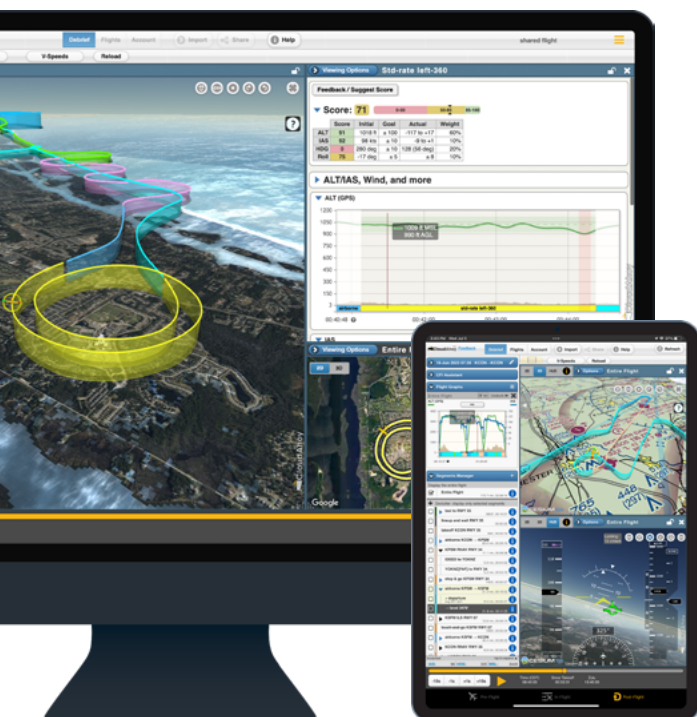
CLOUDAHOY DEBRIEF

Data-Driven Postflight Analysis

Enhance your postflight debrief and refine your flying skills with CloudAhoy Debrief, a data-driven flight analysis tool that integrates directly with ForeFlight Mobile.

- Automatic flight analyzer identifies legs, maneuvers, and procedures for focused review
- Compare all recorded parameters with flight graphs
- View flight track in 2D & 3D with charts & map overlays
- Receive scores on individual segments & procedures to identify opportunities for practice
- Share your flights with friends & family directly or via social media

Visit cloudahoy.com/signup to get started with a 35-day free trial.



SENTRY ADS-B RECEIVERS



Affordable access to essential inflight safety with ForeFlight's exclusive ADS-B receivers.

Sentry Mini

- Dual-Band ADS-B Traffic
- FIS-B Weather
with Weather Replay
- WAAS GPS
- Supports 5 Devices
& Cockpit Sharing

Sentry

Includes *everything* in **Sentry Mini**, and...

- Internal 12hr Battery
- CO Monitor
- AHRS Pitch & Bank
- Pressure Altitude Sensor

Sentry Plus Includes *everything* in **Sentry**, and...

- Internal 18hr Battery
- On-Device Track Logging
- European FLARM Traffic
- Auto-ON/OFF
with External Power
- OLED Live Data Display
- g-Load Meter
- Wi-Fi Client Mode

PORTABLE DEVICES	ADS-B Weather & Traffic	Satellite Weather	GPS	Backup Attitude (AHRS)	Pressure Altitude	Connection
FOREFLIGHT (BUILT BY UAVIONIX)						
Sentry Mini	•		•			Wi-Fi
Sentry	•		•	•	•	Wi-Fi
Sentry Plus	•		•	•	•	Wi-Fi
UAVIONIX						
SkyEcho 2 ADS-B Transceiver (UK / EU)	• <i>Where Available</i>		•		•	Wi-Fi
GARMIN						
GDL 39	•		•	GDL 39 3D	•	Bluetooth
GDL 50 / 51 / 52	GDL 50 / 52	GDL 51 / 52	•	•	•	Bluetooth
GLO			•			Bluetooth
BAD ELF						
GPS Pro / Pro + / Lightning			•		•	Bluetooth
DUAL						
XGPS150 / 160			•			Bluetooth
XGPS170 (DUAL Status Tool)	•		•			Bluetooth
XGPS190 (DUAL Status Tool)	•		•	•		Bluetooth
APPAREO						
Stratus 3	•		•	•	•	Wi-Fi
FOREFLIGHT GDL 90 EXTENSION						
Third-party Developers	•		•	•		Wi-Fi

INSTALLED AVIONICS SYSTEMS

A variety of installed avionics connect with ForeFlight Mobile to deliver capabilities like two-way flight plan transfer, ADS-B weather and traffic, AHRS for backup attitude, GPS position, and more.

Installed Avionics Systems	ADS-B Weather & Traffic	GPS	Backup Attitude (AHRS)	Flight Plan Transfer	Pressure Altitude	Connection
AVIDYNE						
IFD 440 / 540 / 550	●	●	IFD 550	●		Wi-Fi
DYNON						
Skyview*	●	●	●	●	●	Wi-Fi
UAVIONIX						
echoUAT ADS-B Transceiver**	●					Wi-Fi
SkySensor**	●	●			●	Wi-Fi
FREEFLIGHT						
RANGR	●	●				Wi-Fi
HONEYWELL						
Apex FMS with Aspen CG (requires Performance Plan)				●		Wi-Fi
ADG-300 & -400 (requires Performance Plan)				●		Wi-Fi
L3HARRIS						
Lynx	●	●				Wi-Fi
ONBOARD WI-FI SYSTEMS - REQUIRES PERFORMANCE PLANS						
Satcom Direct SDR		●	●		●	Wi-Fi
GoGo ATG		●			●	Wi-Fi
APPAREO						
ESG / ESGi	Stratus 1S / 2 / 2S / 3	●	Stratus 2 / 2S / 3			Wi-Fi
GOLZE ENGINEERING						
ADL 140 [†] / 150B	Satellite Wx	●				Wi-Fi
ADL 180 [†] / 190 / 200	Traffic & Sat. Wx	●	●			Wi-Fi
ADL Connect for IridiumGO! [†]	Satellite Wx					Wi-Fi
AIR AVIONICS						
AIR Connect	ADS-B & FLARM Traffic Only	●				Wi-Fi
AT-1	ADS-B & FLARM Traffic Only	●				Wi-Fi

* Weather and traffic display supported on Experimental systems running software version 15.4.7 and higher.

** For Light Sport and Experimental aircraft. † Portable Device

GARMIN INSTALLED AVIONICS

ForeFlight integrates with Garmin’s **Connex** ecosystem via the Flight Stream 110, 220, and 510 Bluetooth wireless gateways, as well as several all-in-one panel devices.

Garmin Installed Avionics	ADS-B Weather & Traffic	GPS	Backup Attitude (AHRS)	Flight Plan Transfer	Pressure Altitude	Connection
FLIGHT STREAM						
Flight Stream 110		●				Bluetooth
with GTX 345	●	●	●		●	
with GDL 84 / 88	●	●				
Flight Stream 210		●	●		●	Bluetooth
with GTX 345	●	●	●		●	
with GDL 84 / 88	●	●	●		●	
with GNS 430W / 530W or GTN 650 / 750		●	●	●	●	
with G1000		●	●	●	●	
Flight Stream 510 GDL 60						Bluetooth
with GTN 650 / 750		●		●	●	
with GTX 345	●	●	●		●	
with GDL 84 / 88	●	●				
with G500 / G600			●			
with G1000 NXi		●	●	●	●	
with G3000		●	●	●	●	
with G5000		●	●	●	●	
ALL-IN-ONE						
GTX 345 ADS-B In / Out	●	●	●		●	Bluetooth
GNX 375 ADS-B In / Out	●	●	●	●	●	Bluetooth
GPS 175		●	●	●		Bluetooth
GI 275	●	●	●	●	●	Bluetooth
G3X Touch	with GDL 39R	●	●	●	●	Bluetooth

Please note this table highlights common avionics configurations and may not be an exhaustive list of every equipment combination.

BUYING A SUBSCRIPTION



Start at foreflight.com/pricing and follow these steps to customize & purchase your subscription.

1 Choose a Subscription Plan

Individual Plans



2 iPads & 1 iPhone

OR



1 iPad & 2 iPhones



Basic Plus

USD \$120/year • CAD \$156/year

For basic flight planning, flying, & logging.



Pro Plus

USD \$240/year • CAD \$312/year

Everything in **Basic Plus**, plus safety-enhancing hazard awareness features, multi-altitude flight planning with Profile View, essential IFR features like viewing geo-referenced procedure plates directly on the map, and more.



Performance Plus

USD \$360/year • CAD \$468/year

Everything in **Pro Plus**, plus all the most advanced features like forecast visualizations in Profile and 3D, optimized flight planning with integrated Weight & Balance, takeoff and landing distances for pistons, interactive 3D airports and routes, and essential planning features for jet and turboprop pilots.

Business Plans



Any combination of 2 devices per pilot



Business Pro

USD \$240/year • CAD \$312/year

Flight planning in app & on the web, Graphical Briefing, Aviation weather, Aeronautical Maps, VFR & IFR charts, Geo-referenced approaches & charts, Profile View & Hazard Advisor, Cloud Documents, Avionics Connectivity, Printable Navlog, & more.



Business Performance

USD \$360/year • CAD \$468/year

Everything in **Business Pro**, plus aircraft performance profiles, time & fuel calculations, optimized autorouting, PDC & D-ATIS, Trip Assistant, 3D Airports, Preview, & Review, Content Pack cloud distribution, & more.

ForeFlight **Military Flight Bag** subscriptions are also available for both individuals and groups, with additional features to support military operations around the globe.

Learn more at foreflight.com/mfb.

2 Select Your Region(s)



US

FAA VFR & IFR Charts •
Procedure Plates •
Taxi Charts • Documents



Canada

NAV CANADA VNC & IFR
Charts • Procedure Plates
Taxi Charts • Documents



Europe

Jeppesen VFR Navdata •
National VFR & IFR Charts,
Procedures, & Documents
via EUROCONTROL



Australia

Airservices VFR & IFR
Enroute Charts • Procedure
& Aerodrome Charts •
Documents

3 Select Add-ons

Jeppesen Charts

Global IFR Enroute Charts
• Procedure Plates • Taxi
Charts • Airway Manuals

Runway Analysis

Integrated Runway &
Obstacle Analysis product for
jets and turboprops. Requires
Performance subscription.

Europe Only

VFR Charts

VFR Procedure Charts • VFR
ICAO charts • Procedure
Charts, AIPs, & Documents

FLARM License

Display FLARM traffic in
ForeFlight Mobile from a
Sentry Plus or SkyEcho 2
portable receiver.

Subscriptions include 1 region; additional regions \$100 USD each.

foreflight.com/buying-guide